

# EXTENDED COVERAGE

## Light Hazard NFPA 13 Quick Response Sprinkler Concealed

### DESCRIPTION:

Model G4 XLO QREC EC Concealed sprinkler is an Extended Coverage Sprinkler for use in Light Hazard and Ordinary Hazard occupancies with a coverage area of up to 400 square feet (37.2 m<sup>2</sup>) per sprinkler.

The use of extended coverage sprinklers can provide lower installation costs by requiring fewer sprinklers, less piping and reduced labor. The larger K-factor 11.2 (160 metric) provides for reduced pressures to achieve the required flow compared with smaller K-factor sprinklers.

This sprinkler can eliminate the need for precise cutting of drop nipples. The Thread-on/Thread-off cover plate assembly provides up to 1/2" (13 mm) of adjustment to allow the cover to fit accurately against the ceiling. The fire protection system need not be shut down when adjusting or removing the Thread-on/Thread-off cover plate assembly.



### TECHNICAL DATA:

Nominal "K" Factor	11,2 (160)
Minimum sprinkler spacing	9 ft (2,7 m)
Temperature	165°F (74°C)
Maximum working pressure	175 psi (12,1 bar)
Finishes <sup>(1)</sup>	Chrome Polyester coated

Flow requirements			
Flow (gpm / Lpm)	Pressure (psi / bar)	Coverage area (ft <sup>2</sup> / m <sup>2</sup> )	Spacing (ft x ft / m x m)
30 / 113.6	7.0 / 0.49	196 / 18.2	14 x 14 / 4.3 x 4.3
30 / 113.5	7.0 / 0.49	256 / 23.8	16 x 16 / 4.9 x 4.9
33 / 125.0	8.4 / 0.60	324 / 30.1	18 x 18 / 5.5 x 5.5
40 / 151.0	12.3 / 0.88	400 / 37.2	20 x 20 / 6.1 x 6.1

Data sheet:	05
REV:	00



### OPERATION:

This sprinkler uses a proven quick response fusible element in a standard style sprinkler frame with a drop-down deflector. This assembly is recessed into the ceiling and concealed by a flat cover plate assembly.

When the ceiling temperature rises, the solder holding the flat cover plate melts, the flat cover plate released thus exposing the sprinkler inside to the rising ambient temperature.

### INSTALLATION:

Model G4 XLO QREC EC sprinklers have been designed for installation as specified in NFPA13. They must also be installed with the Model AGC Sprinkler Wrench specifically designed.

Install the cover plate by hand turning the cover in the clockwise direction until it is tight against the ceiling.

Cut a 2 5/8" inch (67mm) diameter hole in the ceiling.

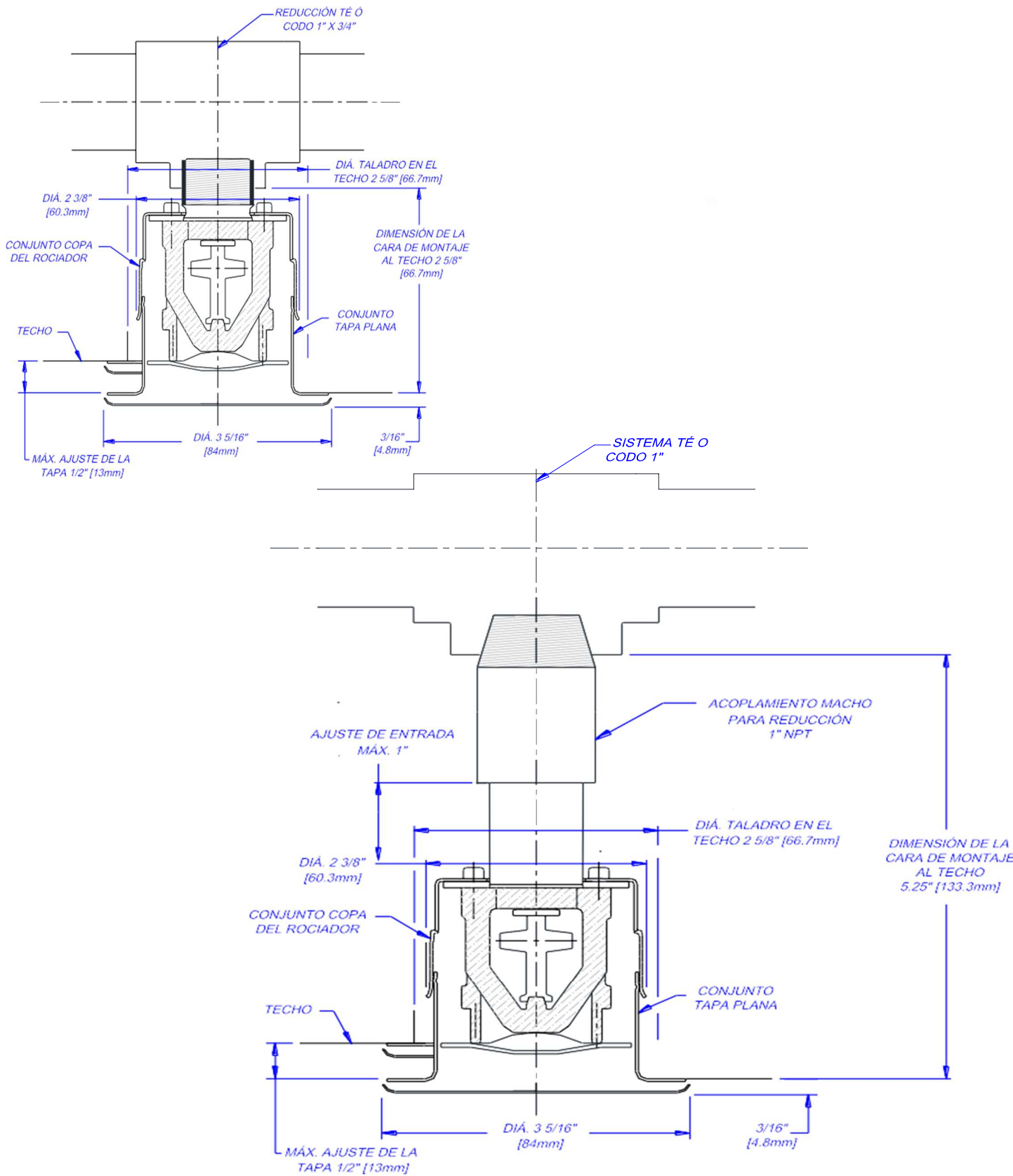
### TEMPERATURE RATING:

Classification	Sprinkler temperature		Cover plate temperature		Ceiling Temperature	
	°F	°C	°F	°C	°F	°C
Ordinary	165	74	135	57	100	38

Data sheet:	05
REV:	00



## DIMENSIONS:



Data sheet:	05
REV:	00

