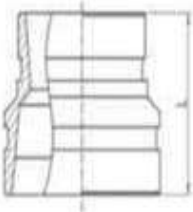
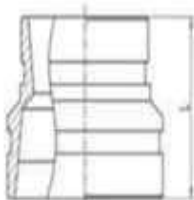


**Grooved
Concentric
Reducer**



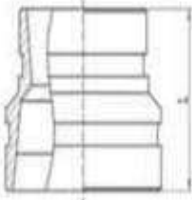
Nominal Size mm/in	Pipe OD Dxd mm/in	Dimensions	Working Pressure Psi/Mpa	Certificate
		mm		
		L		
32x25 1¼x1	42.4x33.7 1.669x1.327	64	300 2.07	FM UL
40x25 1½x1	48.3x33.7 1.9x1.327	64	300 2.07	FM UL
40x32 1½x1¼	48.3x42.4 1.9x1.669	64	300 2.07	FM UL
50x25 2x1	60.3x33.7 2.375x1.327	64	300 2.07	FM UL
50x32 2x1¼	60.3x42.4 2.375x1.669	64	300 2.07	FM UL
50x40 2x1½	60.3x48.3 2.375x1.9	64	300 2.07	FM UL
65x25 2½x1	73x33.7 2.875x1.327	64	300 2.07	FM UL
65x32 2½x1¼	73x42.4 2.875x1.669	64	300 2.07	FM UL
65x50 2½x2	73x60.3 2.875x2.375	64	300 2.07	FM UL
65x25 2½x1	76.1x33.7 2.875x1.327	64	300 2.07	FM UL
65x32 2½x1¼	76.1x42.4 2.875x1.669	64	300 2.07	FM UL
65x40 2½x1½	76.1x48.3 2.875x1.900	64	300 2.07	FM UL
65x50 2½x2	76.1x60.3 2.875x2.375	64	300 2.07	FM UL
80x25 3x1	88.9x33.7 3.5x1.327	64	300 2.07	FM UL
80x32 3x1¼	88.9x42.4 3.5x1.669	64	300 2.07	FM UL
80x40 3x1½	88.9x48.3 3.5x1.9	64	300 2.07	FM UL
80x50 3x2	88.9x60.3 3.5x2.375	64	300 2.07	FM UL
80x65 3x2½	88.9x73 3.5x2.875	64	300 2.07	FM UL
80x65 3x2½	88.9x76.1 3.5x3	64	300 2.07	FM UL
100x25 4x1	108x33.7 4.25x1.327	76	300 2.07	FM UL
100x32 4x1¼	108x42.4 4.5x1.669	76	300 2.07	FM UL
100x40 4x1½	108x48.3 4.25x1.9	76	300 2.07	FM UL
100x50 4x2	108x60.3 4.25x2.375	76	300 2.07	FM UL
100x65 4x2½	108x73 4.5x2.875	76	300 2.07	FM UL

Grooved
Concentric
Reducer



Nominal Size mm/in	Pipe OD Dxd mm/in	Dimensions		Working Pressure Psi/Mpa	Certificate
		mm			
		L			
100x65 4x2½	108x76.1 4.25x3	76		300 2.07	FM UL
100x80 4x3	108x88.9 4.25x3.5	76		300 2.07	FM UL
100x25 4x1	114.3x33.7 4.5x1.327	76		300 2.07	FM UL
100x32 4x1¼	114.3x42.4 4.5x1.669	76		300 2.07	FM UL
100x40 4x1½	114.3x48.3 4.5x1.9	76		300 2.07	FM UL
100x50 4x2	114.3x60.3 4.5x2.375	76		300 2.07	FM UL
100x65 4x2½	114.3x73 4.5x2.875	76		300 2.07	FM UL
100x65 4x2½	114.3x76.1 4.5x3	76		300 2.07	FM UL
100x80 4x3	114.3x88.9 4.5x3.5	76		300 2.07	FM UL
125x25 5x1	133x33.7 5.25x1.327	89		300 2.07	FM UL
125x32 5x1¼	133x42.4 5.25x1.669	89		300 2.07	FM UL
125x40 5x1½	133x48.3 5.25x1.9	89		300 2.07	FM UL
125x50 5x2	133x60.3 5.25x2.375	89		300 2.07	FM UL
125x65 5x2½	133x73 5.25x2.875	89		300 2.07	FM UL
125x65 5x2½	133x76.1 5.25x3	89		300 2.07	FM UL
125x80 5x3	133x88.9 5.25x3.5	89		300 2.07	FM UL
125x100 5x4	133x108 5.25x4.25	89		300 2.07	FM UL
125x50 5x2	139.7x60.3 5.5x2.375	89		300 2.07	FM UL
125x65 5x2½	139.7x73 5.5x2.875	89		300 2.07	FM UL
125x65 5x2½	139.7x76.1 5.5x3	89		300 2.07	FM UL
125x80 5x3	139.7x88.9 5.5x3.5	89		300 2.07	FM UL
125x100 5x4	139.7x114.3 5.5x4.5	89		300 2.07	FM UL
150x25 6x1	159x33.7 6.25x1.327	102		300 2.07	FM UL
150x32 6x1¼	159x42.4 6.25x1.669	102		300 2.07	FM UL

**Grooved
Concentric
Reducer**



Nominal Size mm/in	Pipe OD Dxd mm/in	Dimensions	Working Pressure Psi/Mpa	Certificate
		mm		
		L		
150x40 6x1½	159x48.3 6.25x1.9	102	300 2.07	FM UL
150x50 6x2	159x60.3 6.25x2.375	102	300 2.07	FM UL
150x65 6x2½	159x73 6.25x2.875	102	300 2.07	FM UL
150x65 6x2½	159x76.1 6.25x3	102	300 2.07	FM UL
150x80 6x3	159x88.9 6.25x3.5	102	300 2.07	FM UL
150x100 6x4	159x108 6.25x4.5	102	300 2.07	FM UL
150x100 6x4	159x114.3 6.25x4.5	102	300 2.07	FM UL
150x50 6x2	165.1x60.3 6.5x2.375	102	300 2.07	FM UL
150x65 6x2½	165.1x73 6.5x2.875	102	300 2.07	FM UL
150x65 6x2½	165.1x76.1 6.5x3	102	300 2.07	FM UL
150x80 6x3	165.1x88.9 6.5x3.5	102	300 2.07	FM UL
150x100 6x4	165.1x114.3 6.5x4.5	102	300 2.07	FM UL
150x125 6x5	165.1x139.7 6.5x5.5	102	300 2.07	FM UL
150x50 6x2	168.3x60.3 6.625x2.375	102	300 2.07	FM UL
150x65 6x2½	168.3x73 6.625x2.875	102	300 2.07	FM UL
150x65 6x2½	168.3x76.1 6.625x3	102	300 2.07	FM UL
150x80 6x3	168.3x88.9 6.625x3.5	102	300 2.07	FM UL
150x100 6x4	168.3x114.3 6.625x4.5	102	300 2.07	FM UL
150x125 6x5	168.3x139.7 6.625x5.5	102	300 2.07	FM UL
200x50 8x2	219.1x60.3 8.625x2.375	127	300 2.07	FM UL
200x65 8x2½	219.1x73 8.625x2.875	127	300 2.07	FM UL
200x65 8x2½	219.1x76.1 8.625x3	127	300 2.07	FM UL
200x80 8x3	219.1x88.9 8.625x3.5	127	300 2.07	FM UL
200x100 8x4	219.1x114.3 8.625x4.5	127	300 2.07	FM UL
200x125 8x5	219.1x139.7 8.625x5.5	127	300 2.07	FM UL
200x150 8x6	219.1x165.1 8.625x6.5	127	300 2.07	FM UL
200x150 8x6	219.1x168.3 8.625x6.625	127	300 2.07	FM UL