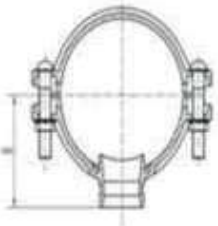
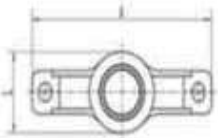
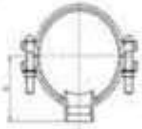
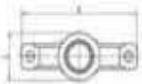


Grooved Mechanical Tee



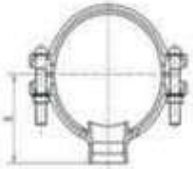
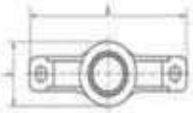
Nominal Size mm/in	Pipe OD Dxd mm/in	Dimensions					Working Pressure Psi/Mpa	Certificate
		mm						
		Hole Dimension	Φ	L	A	H		
50×25 2×1	60.3×33.7 2.375×1.327	48	75	120	70	69	300 2.07	FM UL
50×32 2×1¼	60.3×42.4 2.375×1.669	46	75	120	70	69	300 2.07	FM UL
50×40 2×1½	60.3×48.3 2.375×1.9	46	75	120	70	68	300 2.07	FM UL
65×25 2½×1	73×33.7 2.875×1.327	38	93	137	78	77	300 2.07	FM UL
65×32 2½×1¼	73×42.4 2.875×1.669	46	93	137	78	83	300 2.07	FM UL
65×40 2½×1½	73×48.3 2.875×1.9	51	93	137	78	83	300 2.07	FM UL
65×25 2½×1	76.1×33.7 3×1.327	38	102	144	78	77	300 2.07	FM UL
80×25 3×1	88.9×33.7 3.5×1.327	38	114	152	83	77	300 2.07	FM UL
80×32 3×1¼	88.9×42.4 3.5×1.669	46	114	152	85	83	300 2.07	FM UL
80×40 3×1½	88.9×48.3 3.5×1.9	51	114	152	85	93	300 2.07	FM UL
80×50 3×2	88.9×60.3 3.5×2.375	64	114	152	85	99	300 2.07	FM UL
100×25 4×1	108×33.7 4.25×1.327	38	135	172	93	77	300 2.07	FM UL
100×32 4×1¼	108×42.4 4.25×1.669	46	135	172	93	83	300 2.07	FM UL
100×40 4×1½	108×48.3 4.25×1.9	51	135	172	93	92	300 2.07	FM UL
100×50 4×2	108×60.3 4.25×2	64	135	172	93	100	300 2.07	FM UL
100×65 4×2½	108×73 4.25×2.875	70	135	172	93	117	300 2.07	FM UL
100×65 4×2½	108×76.1 4.25×3	70	135	172	93	117	300 2.07	FM UL
100×80 4×3	108×88.9 4.25×3.5	89	135	172	93	129	300 2.07	FM UL
100×25 4×1	114.3×33.7 4.5×1.327	38	140	180	97	77	300 2.07	FM UL
100×32 4×1¼	114.3×42.4 4.5×1.669	46	140	180	97	83	300 2.07	FM UL
100×40 4×1½	114.3×48.3 4.5×1.9	51	140	180	97	92	300 2.07	FM UL

**Grooved
Mechanical
Tee**



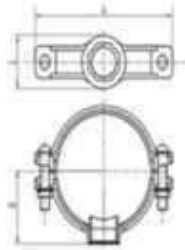
Nominal Size mm/in	Pipe OD Dxd mm/in	Dimensions					Woking Presssure Psi/Mpa	Certificate
		mm						
		Hole Dimension	Φ	L	A	H		
100×50 4×2	114.3×60.3 4.5×2.375	64	140	180	99	99	300 2.07	FM UL
100×65 4×2½	114.3×73 4.5×2.875	70	140	180	99	122	300 2.07	FM UL
100×65 4×2½	114.3×76.1 4.5×3	70	140	180	99	122	300 2.07	FM UL
100×80 4×3	114.3×88.9 4.5×3.5	89	140	180	102	129	300 2.07	FM UL
125×25 5×1	133×33.7 5.25×1.327	38	160	210	106	77	300 2.07	FM UL
125×32 5×1¼	133×42.4 5.25×1.669	46	160	210	106	83	300 2.07	FM UL
125×40 5×1½	133×48.3 5.25×1.9	51	160	210	106	94	300 2.07	FM UL
125×50 5×2	133×60.3 5.25×2.375	64	160	210	106	100	300 2.07	FM UL
125×65 5×2½	133×73 5.25×2.875	70	160	210	106	122	300 2.07	FM UL
125×65 5×2½	133×76.1 5.25×3	70	160	210	106	122	300 2.07	FM UL
125×80 5×3	133×88.9 5.25×3.5	89	160	210	106	134	300 2.07	FM UL
125×25 5×1	139.7×33.7 5.5×1.327	38	168	220	109	77	300 2.07	FM UL
125×32 5×1¼	139.7×42.4 5.5×1.669	46	168	220	109	83	300 2.07	FM UL
125×40 5×1½	139.7×48.3 5.5×1.9	51	168	220	109	92	300 2.07	FM UL
125×50 5×2	139.7×60.3 5.5×2.375	64	168	220	112	100	300 2.07	FM UL
125×80 5×3	139.7×88.9 5.5×3.5	89	168	220	113	134	300 2.07	FM UL
125×100 5×4	139.7×114.3 5.5×4.5	114	168	220	113	156	300 2.07	FM UL
150×25 6×1	159×33.7 6.25×1.327	38	187	242	112	77	300 2.07	FM UL
150×32 6×1¼	159×42.4 6.25×1.669	46	187	242	112	83	300 2.07	FM UL
150×40 6×1½	159×48.3 6.25×1.9	51	187	242	112	94	300 2.07	FM UL
150×50 6×2	159×60.3 6.25×2.375	64	187	242	118	99	300 2.07	FM UL

**Grooved
Mechanical
Tee**



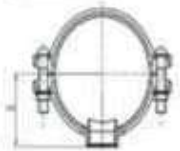
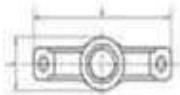
Nominal Size mm/in	Pipe OD Dxd mm/in	Dimensions					Woking Pressure Psi/Mpa	Certificate
		mm						
		Hole Dimension	Φ	L	A	H		
150x65 6x2½	159x73 6.25x2.87	70	187	242	121	122	300 2.07	FM UL
150x65 6x2½	159x76.1 6.25x3	70	187	242	121	122	300 2.07	FM UL
150x80 6x3	159x88.9 6.25x3.5	89	187	242	121	136	300 2.07	FM UL
150x25 6x1	165.1x33. 6.5x1.327	38	194	248	118	77	300 2.07	FM UL
150x32 6x1¼	165.1x42. 6.5x1.669	46	194	248	118	83	300 2.07	FM UL
150x40 6x1½	165.1x48. 6.5x1.9	51	194	248	118	94	300 2.07	FM UL
150x50 6x2	165.1x60. 6.5x2.375	64	194	248	118	99	300 2.07	FM UL
150x65 6x2½	165.1x73 6.5x2.875	70	194	248	126	122	300 2.07	FM UL
150x80 6x3	165.1x88. 6.5x3.5	89	194	248	125	139	300 2.07	FM UL
150x100 6x4	165.1x114 6.5x4.5	114	194	248	125	159	300 2.07	FM UL
150x25 6x1	168.3x33. 6.625x1.3	38	198	248	128	77	300 2.07	FM UL
150x32 6x1¼	168.3x42. 6.625x1.6	46	198	248	130	83	300 2.07	FM UL
150x40 6x1½	168.3x48. 6.625x1.9	51	198	248	130	94	300 2.07	FM UL
150x50 6x2	168.3x60. 6.625x2.3	64	198	248	130	99	300 2.07	FM UL
150x65 6x2½	168.3x73 6.625x3	70	198	248	131	122	300 2.07	FM UL
150x100 6x4	168.3x114 6.625x4.5	114	198	248	133	157	300 2.07	FM UL
200x65 8x2½	219.1x73 8.625x2.8	70	250	311	152	130	300 2.07	FM UL
200x65 8x2½	219.1x76. 8.625x3	70	250	311	152	130	300 2.07	FM UL
200x80 8x3	219.1x88. 8.625x3.5	89	250	311	152	137	300 2.07	FM UL
200x100 8x4	219.1x114 8.625x4.5	114	250	311	153	162	300 2.07	FM UL
200x125 8x5	219.1x139 8.625x5.5	135	250	311	153	178	300 2.07	FM UL
200x150 8x6	219.1x165 8.625x6.5	160	250	311	160	214	300 2.07	FM UL
200x150 8x6	219.1x168 8.625x6.6	160	250	311	160	214	300 2.07	FM UL

Threaded Mechanical Tee



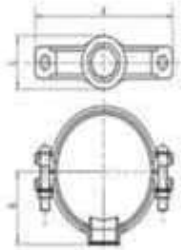
Nominal Size mm/in	Pipe OD D×d mm/in	Dimensions					Working Pressure Psi/Mpa	Certificate
		mm						
		Hole Dimension	Φ	L	A	H		
2×½	60.3×21.3 2.375×0.825	38	75	120	50	54	300 2.07	FM UL
50×20 2×¾	60.3×26.7 2.375×1.05	38	75	120	50	54	300 2.07	FM UL
50×25 2×1	60.3×33.7 2.375×1.327	38	75	120	57	69	300 2.07	FM UL
50×32 2×1¼	60.3×42.4 2.375×1.669	46	75	120	57	69	300 2.07	FM UL
50×40 2×1½	60.3×48.3 2.375×1.9	46	75	120	61	68	300 2.07	FM UL
65×15 2½×½	73×21.3 2.875×0.825	38	93	139	58	54	300 2.07	FM UL
65×20 2½×¾	73×26.7 2.875×1.05	38	93	139	58	54	300 2.07	FM UL
65×25 2½×1	73×33.7 2.875×1.327	38	93	139	61	77	300 2.07	FM UL
65×32 2½×1¼	73×42.4 2.875×1.669	46	93	139	61	83	300 2.07	FM UL
65×40 2½×1½	73×48.3 2.875×1.9	51	93	139	61	83	300 2.07	FM UL
65×50 2½×2	73×60.3 2.875×2.375	51	93	139	66	83	300 2.07	FM UL
65×25 2½×1	76.1×33.7 3×1.327	38	102	144	67	77	300 2.07	FM UL
65×32 2½×1¼	76.1×42.4 3×1.669	46	102	144	67	83	300 2.07	FM UL
65×40 2½×1½	76.1×48.3 3×1.9	51	102	144	67	83	300 2.07	FM UL
65×50 2½×2	76.1×60.3 3×2.375	51	102	144	67	83	300 2.07	FM UL
80×15 3×½	88.9×21.3 3.5×0.825	38	114	155	59	59	300 2.07	FM UL
80×25 3×1	88.9×33.7 3.5×1.327	38	114	155	74	77	300 2.07	FM UL
80×32 3×1¼	88.9×42.4 3.5×1.669	46	114	155	73	83	300 2.07	FM UL
80×40 3×1½	88.9×48.3 3.5×1.9	51	114	155	73	93	300 2.07	FM UL
80×50 3×2	88.9×60.3 3.5×2.375	64	114	155	78	99	300 2.07	FM UL
100×25 4×1	108×33.7 4.25×1.327	38	135	172	87	77	300 2.07	FM UL

Threaded Mechanical Tee



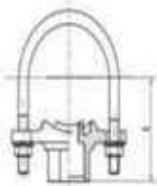
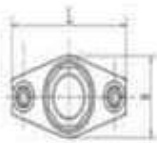
Nominal Size mm/in	Pipe OD Dxd mm/in	Dimensions					Working Pressure Psi/Mpa	Certificate
		mm						
		Hole Dimension	Φ	L	A	H		
125x65 5x2½	139.7x76.1 5.5x3	70	168	220	103	122	300 2.07	FM UL
150x25 6x1	159x33.7 6.25x1.327	38	187	242	112	77	300 2.07	FM UL
150x32 6x1¼	159x42.4 6.25x1.669	46	187	242	112	83	300 2.07	FM UL
150x40 6x1½	159x48.3 6.25x1.9	51	187	242	106	94	300 2.07	FM UL
150x50 6x2	159x60.3 6.25x2.375	64	187	242	106	100	300 2.07	FM UL
150x65 6x2½	159x73 6.25x2.875	70	187	242	106	122	300 2.07	FM UL
150x65 6x2½	159x76.1 6.25x3	70	187	242	106	122	300 2.07	FM UL
150x80 6x3	159x88.9 6.25x3.5	89	187	242	121	136	300 2.07	FM UL
150x25 6x1	165.1x33.7 6.5x1.327	38	194	248	106	77	300 2.07	FM UL
150x32 6x1¼	165.1x42.4 6.5x1.669	46	194	248	112	83	300 2.07	FM UL
150x40 6x1½	165.1x48.3 6.5x1.9	51	194	248	112	94	300 2.07	FM UL
150x50 6x2	165.1x60.3 6.5x2.375	64	194	248	116	99	300 2.07	FM UL
150x65 6x2½	165.1x76.1 6.5x3	70	194	248	106	122	300 2.07	FM UL
150x25 6x1	168.3x33.7 6.625x1.327	38	198	248	120	77	300 2.07	FM UL
150x32 6x1¼	168.3x42.4 6.625x1.669	46	198	248	120	83	300 2.07	FM UL
150x40 6x1½	168.3x48.3 6.625x1.9	51	198	248	120	94	300 2.07	FM UL
150x50 6x2	168.3x60.3 6.625x2.375	64	198	248	120	99	300 2.07	FM UL
150x65 6x2½	168.3x76.1 6.625x3	70	198	248	128	122	300 2.07	FM UL
150x80 6x3	168.3x88.9 6.625x3.5	89	198	248	128	136	300 2.07	FM UL
200x25 8x1	219.1x33.7 8.625x1.327	38	250	311	146	77	300 2.07	FM UL
200x32 8x1¼	219.1x42.4 8.625x1.669	46	250	311	146	83	300 2.07	FM UL
200x40 8x1½	219.1x48.3 8.625x1.9	51	250	311	146	94	300 2.07	FM UL
200x50 8x2	219.1x60.3 8.625x2.375	64	250	311	146	100	300 2.07	FM UL
200x65 8x2½	219.1x76.1 8.625x3	70	250	311	146	130	300 2.07	FM UL
200x80 8x3	219.1x88.9 8.625x3.5	89	250	311	152	137	300 2.07	FM UL
200x100 8x4	219.1x114.3 8.625x4.5	114	250	311	153	162	300 2.07	FM UL
200x125 8x5	219.1x139.7 8.625x5.5	135	250	311	153	178	300 2.07	FM UL
200x150 8x6	219.1x165.1 8.625x6.5	160	250	311	160	214	300 2.07	FM UL
200x150 8x6	219.1x168.3 8.625x6.625	160	250	311	160	214	300 2.07	FM UL

Threaded Mechanical Tee



Nominal Size mm/in	Pipe OD Dxd mm/in	Dimensions					Working Pressure Psi/Mpa	Certificate
		mm						
		Hole Dimension	Φ	L	A	H		
100×32 4×1¼	108×42.4 4.25×1.669	46	135	172	87	83	300 2.07	FM UL
100×40 4×1½	108×48.3 4.25×1.9	51	135	172	87	92	300 2.07	FM UL
100×50 4×2	108×60.3 4.25×2	64	135	172	87	100	300 2.07	FM UL
100×65 4×2½	108×73 4.25×2.875	70	135	172	95	117	300 2.07	FM UL
100×65 4×2½	108×76.1 4.25×3	70	135	172	95	117	300 2.07	FM UL
100×80 4×3	108×88.9 4.25×3.5	89	135	172	95	129	300 2.07	FM UL
100×25 4×1	114.3×33.7 4.5×1.327	38	140	181	83	77	300 2.07	FM UL
100×32 4×1¼	114.3×42.4 4.5×1.669	46	140	181	95	83	300 2.07	FM UL
100×40 4×1½	114.3×48.3 4.5×1.9	51	140	181	95	92	300 2.07	FM UL
100×50 4×2	114.3×60.3 4.5×2.375	64	140	181	93	100	300 2.07	FM UL
100×65 4×2½	114.3×76.1 4.5×3	70	140	181	93	122	300 2.07	FM UL
125×25 5×1	133×33.7 5.25×1.327	38	160	210	100	77	300 2.07	FM UL
125×32 5×1¼	133×42.4 5.25×1.669	46	160	210	100	83	300 2.07	FM UL
125×40 5×1½	133×48.3 5.25×1.9	51	160	210	100	94	300 2.07	FM UL
125×50 5×2	133×60.3 5.25×2.375	64	160	210	100	100	300 2.07	FM UL
125×65 5×2½	133×73 5.25×2.875	70	160	210	100	122	300 2.07	FM UL
125×65 5×2½	133×76.1 5.25×3	70	160	210	100	122	300 2.07	FM UL
125×80 5×3	133×88.9 5.25×3.5	89	160	210	100	134	300 2.07	FM UL
125×25 5×1	139.7×33.7 5.5×1.327	38	168	210	100	77	300 2.07	FM UL
125×32 5×1¼	139.7×42.4 5.5×1.669	46	168	220	100	83	300 2.07	FM UL
125×40 5×1½	139.7×48.3 5.5×1.9	51	168	220	100	92	300 2.07	FM UL
125×50 5×2	139.7×60.3 5.5×2.375	64	168	220	103	100	300 2.07	FM UL

U-Bolt Mechanical Tee



Nominal Size mm/in	Pipe OD Dxd mm/in	Bolt Size mm	Dimensions				Working Pressure Psi/Mpa	Certificate
			mm					
			Hole Dimension	L	A	H		
25x15 1x½	33.7x21.3 1.327x0.825	M10x70	24	76	49	43	300 2.07	FM UL
25x20 1x¾	33.7x26.9 1.327x1.05	M10x70	24	84	58	43	300 2.07	FM UL
32x15 1¼x½	42.4x21.3 1.669x0.825	M10x78	30	98	45	56	300 2.07	FM UL
32x20 1¼x¾	42.4x26.9 1.669x1.05	M10x78	30	98	45	56	300 2.07	FM UL
32x25 1¼x1	42.4x33.7 1.669x1.327	M10x78	30	98	54	56	300 2.07	FM UL
40x15 1½x½	48.3x21.3 1.900x0.825	M10x78	30	106	48	59	300 2.07	FM UL
40x20 1½x¾	48.3x26.9 1.900x1.05	M10x78	30	106	54	59	300 2.07	FM UL
40x25 1½x1	48.3x33.7 1.900x1.327	M10x78	30	106	58	59	300 2.07	FM UL
50x15 2x½	60.3x21.3 2.375x0.825	M10x92	30	120	54	59	300 2.07	FM UL
50x20 2x¾	60.3x26.9 2.375x1.05	M10x92	30	120	56	59	300 2.07	FM UL
50x25 2x1	60.3x33.7 2.375x1.327	M10x92	30	120	66	59	300 2.07	FM UL
65x15 2½x½	73x21.3 2.875x0.825	M10x108	30	139	61	59	300 2.07	FM UL
65x20 2½x¾	73x26.9 2.875x1.05	M10x108	30	139	63	59	300 2.07	FM UL
65x25 2½x1	73x33.7 2.875x1.327	M10x108	30	139	70	59	300 2.07	FM UL
65x15 2½x½	76.1x21.3 3x0.825	M10x108	30	139	61	59	300 2.07	FM UL
65x20 2½x¾	76.1x26.9 3x1.05	M10x108	30	139	67	59	300 2.07	FM UL
65x25 2½x1	76.1x33.7 3x1.327	M10x108	30	139	74	59	300 2.07	FM UL

Grooved Eccentric Reducer



Nominal Size mm/in	Pipe OD Dxd mm/in	Dimensions	Working Pressure Psi/Mpa	Certificate
		mm		
		L		
80x50 3x2	88.9x60.3 3.5x2.375	64	300 2.07	FM UL
100x50 4x2	114.3x60.3 4.5x2.375	76	300 2.07	FM UL
100x65 4x2½	114.3x73 4.5x2.875	76	300 2.07	FM UL
100x65 4x2½	114.3x76.1 4.5x3	76	300 2.07	FM UL
100x80 4x3	114.3x88.9 4.5x3.5	76	300 2.07	FM UL
125x50 5x2	139.7x60.3 5.5x2.375	89	300 2.07	FM UL